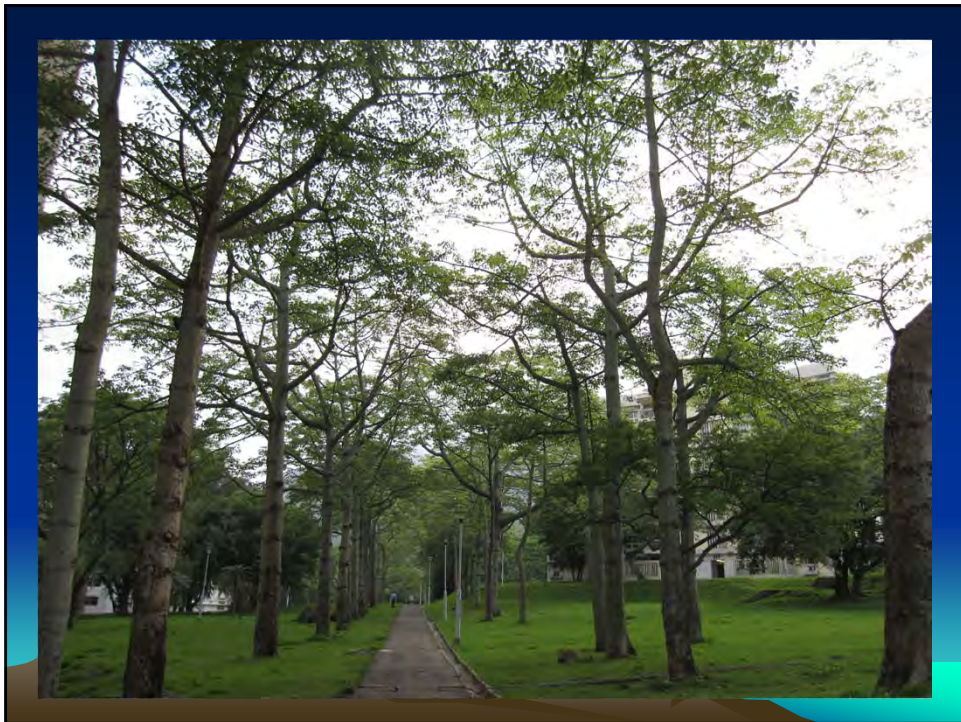


# CUT OR NOT TO CUT

A TREE MANAGEMENT DILEMMA

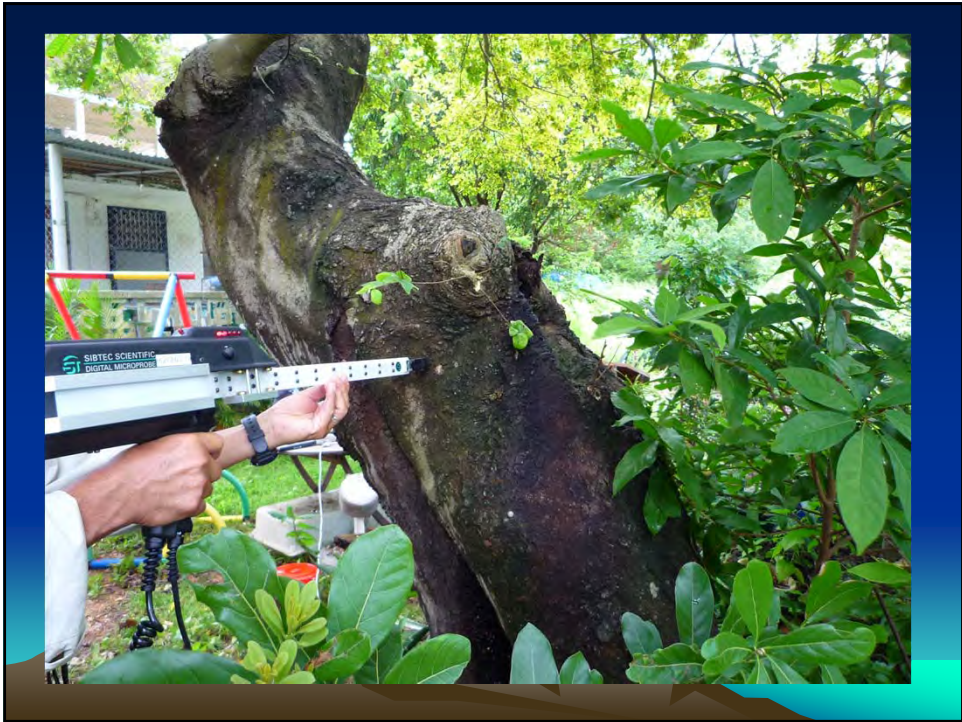
By  
CHEUNG Yat-wah



- It is easy to plant a tree
- It is not easy to maintain a tree
- It is not easy to protect a tree
- It is hard to prune a tree
- It is difficult to cut a tree

## CHECKING TREES BY INSTRUMENTS

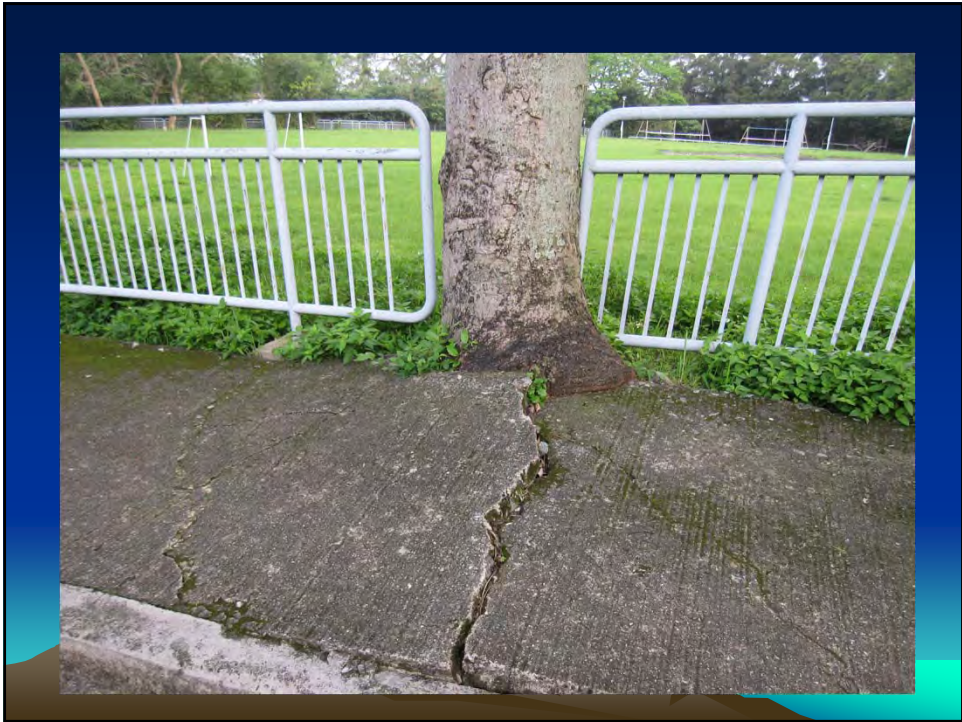
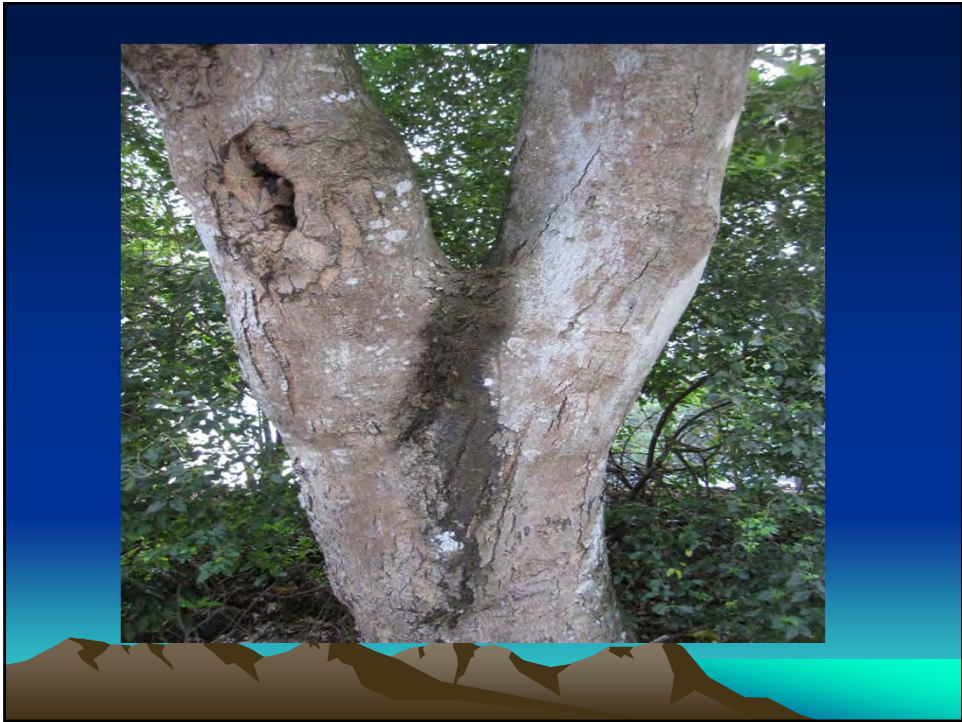






## By Visual Inspection





# Tree Cutting Dilemma

## (1) Tree Management Officer

### (A) Subjective View

only aim at the tree : Tree oriented

### (B) Objective View

consider the surroundings : People oriented

### (C) Other Officers/Senior Officers Ideas

## (2) Public Points of View

### (A) Private Interest

House and other development

Causing allergy by flowers or seeds to nearby people

### (B) Public Interest

Green groups concern and with special interest e.g. OVT

Councilors' concern on voters' interest e.g. A point

### (3) Other Professionals Ideas

#### (A) Structural Point of View

affect the structures and nearby buildings

#### (B) Planning Point of View

site design constraint in site development

