




SAMEX for Horticulture Solutions

SAMEX Systems Ltd.



**SAMEX**



 **Agenda**

---

- Company Background
- The horticulture solutions overview
- Q&A

**SAMEX**

2

## **SAMEX Systems Ltd.**

---

- A professional EAM and FM consulting firm  
一家專業的企業資產設施管理解決方案公司
- Hong Kong IFMA Fellow  
國際設施管理協會香港分會會員
- HKIFM Honor Fellow  
香港設施管理協會榮譽會員
- Founder of IFMA, Hong Kong Chapter  
IFMA香港分會創辦人
- Started since 1995  
我們由1995年起開始提供解決方案
- Architectural and Information Technology background  
以建築師和資訊科技為背景的公司
- Dedicated on technology appliance on FM/EAM  
致力於企業資產設施管理應用方案推廣
- The first company brings the FM concept in Hong Kong  
香港第一家引進物業設施管理解決方案的公司

**SAMEX**

3

## **What is SAMEX?**

---

- A computerized asset (horticulture) management system  
一套電腦化資產(園藝)管理系統
- Provides historical and critical Assets Information  
提供資產的重要資料及歷史記錄追蹤
- Provides a monitoring tool to ensure the works are properly done on-site  
提供一個監督工具，以確保現場工作適當地得以進行
- Modules included 所包含之模塊：
  - Asset (Horticulture) Management 資產(園藝)管理
  - Work Management 工作管理
  - Contract Management 合同管理
  - Mobile Solutions (Routine Inspections, RFID, Work Dispatch)  
移動解決方案 (定期定點巡檢，無線射頻，工單派遣)
  - Other Functionalities 其他功能

**SAMEX**

4

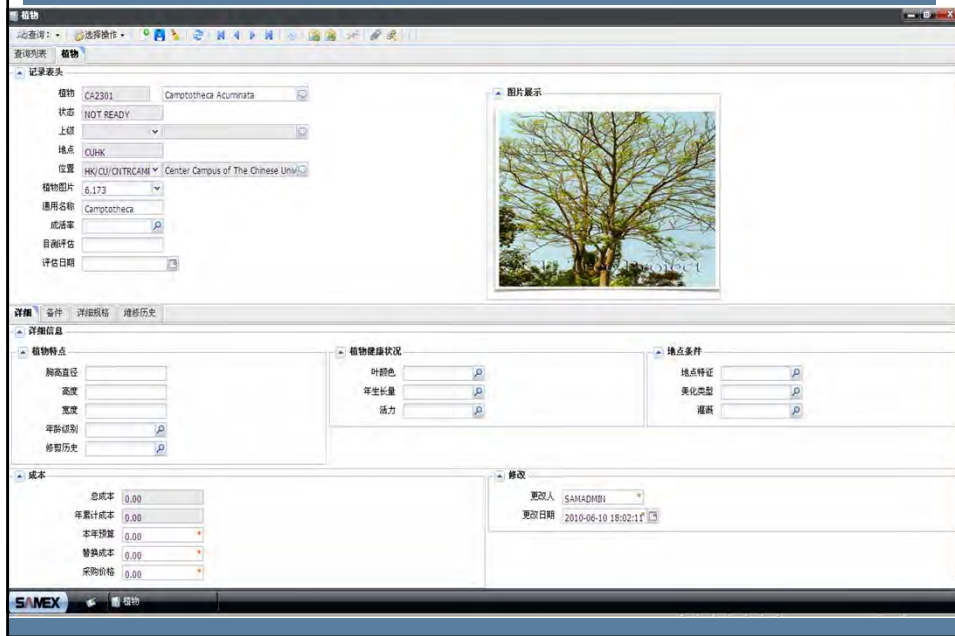
## SAMEX – Asset (Horticulture) Management - 資產(園藝)管理

- Asset Life Cycle Management – 全生命週期管理
  - From nursery to retirement, the entire historical CV  
由出生到死亡的完整生命履歷表
  - Use RFID + GPS + GIS to track movement histories  
利用無線射頻 + 全球定位 + 地理信息功能來跟蹤位置改變及維修記錄
- Provides Asset's Critical Information – 提供資產重要資料
  - Unique ID, Name, Description (獨立編號, 名稱及詳細描述)
  - Location (包括GIS座標位置), Priority
  - Classifications, Date of Installation (分類、原產地, 安裝日期)
  - Specifications and Pictures (圖片以及詳細規格, 包括種類, 高寬度, 冠闊, 受保護級別等)
- Provides maintenance and event history, as well as costs
  - 提供完整維修記錄 (剪枝, 施肥, 以及事故報告等, 例如樹枝傷人, 壓車等)

## SAMEX – Asset (Horticulture) Management - 資產(園藝)管理

- Provides procedure template  
提供維修模板, 例如不同種類的樹木需要不同維修步驟及注意事項
- Provides safety related instructions  
提供安全相關信息, 例如高空作業所需帶備之工具以及注意事項

## SAMEX – Asset Screen Capture 資產介面樣例



## SAMEX – Asset Screen Capture 資產介面樣例



## ☑ SAMEX – Asset (Horticulture) Management - 資產(園藝)管理

### ■ The steps to setup 使用步驟:

#### ■ PDA to on-site collect asset data – 利用PDA現場收集資料

1. Asset Number generation from PDA – 由PDA產生資產編號
2. Collect Plants basic information 收集資產(樹木)基本資料, 包括:
  - Photo (利用PDA或者數碼相機)
  - Plants specifications (胸圍直徑, 高度, 種類, 冠闊, 葉顏色...)
  - Installation Date and Assessment Condition (安裝日期及樹木評估)
  - Location (利用PDA上的GPS – 衛星定位功能)
  - ...
3. Attach RFID Tag
  1. 將RFID Tag 植入樹木
  2. 通過PDA將Asset Number寫入RFID Tag
4. Repeat above steps for other assets (重複以上步驟直至所有樹木數據收集完成)

#### ■ Transmit data from PDA to SAMEX, through GPRS/3G/Wifi (將PDA收集的數據經3G/GPRS/無線網絡傳送至SAMEX)

**SAMEX**

9

## ☑ SAMEX – Asset (Horticulture) Management - 資產(園藝)管理

將樹木植入RFID



**SAMEX**

10

## SAMEX – Work Management 工作管理

- Proactive Works (Preventive) – 主動式(預防性)工作
  - Time-base PM  
(i.e. Routine Inspections, 月檢、季度檢、年檢)
- Reactive Works – 被動性工作
  - Corrective Maintenance
  - Emergency Maintenance
  - Improvement Project
- Help Desk
  - Event Management (事故報告, 例如樹木傾倒傷人、車)
  - Complaints Handling (公眾投訴)
  - Service Request (服務請求)

**SAMEX**

11

## SAMEX – Proactive Works (Preventive) – 主動式(預防性)工作

- Step 1: SAMEX generates the Inspection Work Orders automatically when the schedule is on due  
當計畫到期時, SAMEX自動產生巡檢工單
- Step 2: SAMEX dispatches Inspection Work Orders to PDA  
SAMEX自動下載樹木巡檢之工單至PDA
- Step 3: Perform all the works based on instructions downloaded  
巡檢人員根據PDA工單上下載的巡檢步驟進行相應的檢查
- Step 4: Record all the inspection results in PDA and write the timestamp back to the assets  
巡檢人員在PDA上輸入巡檢結果, 並通過PDA將到場及完工日期、時間寫返去樹木中
- Repeat the above steps to complete all the work orders in PDA  
重複以上步驟, 直至PDA上所有工單全部完成
- Transmit data from PDA to SAMEX, through GPRS/3G/Wifi  
(將PDA收集的數據經3G/GPRS/無線網絡傳送至SAMEX)

**SAMEX**

12



### SAMEX – Proactive Works (Asset Update)主動性工作(資產更新)

- 定期更新樹木資料 – 收集樹木粗度、高度，樹葉顏色變化，枯枝情況，冠闊等資料，然後上傳至SAMEX



**SAMEX**

13



### SAMEX – Proactive Works (Preventive) – 主動式(預防性)工作



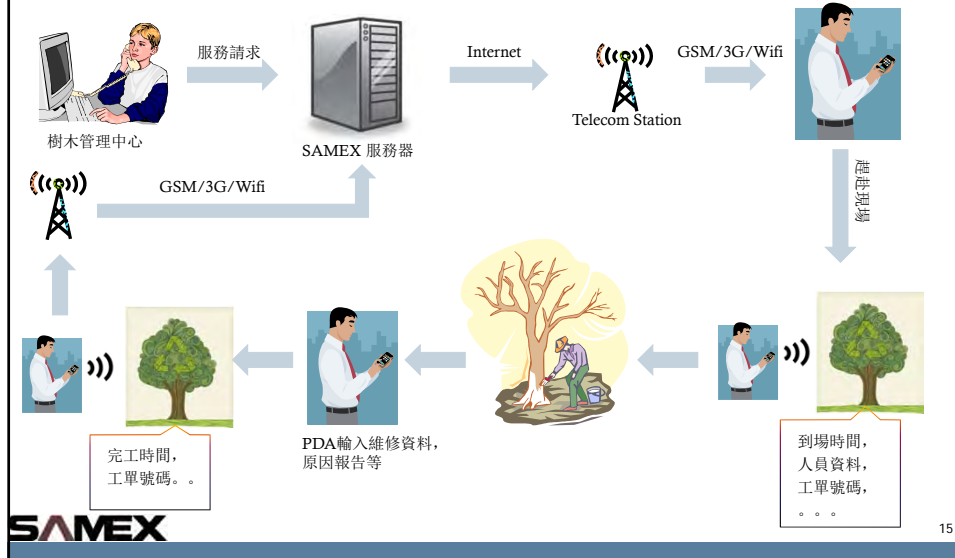
- 3D Laser Mobile Scanner – 3維車載激光掃描系統, 一天完成核心地區數據採集
  - 數據採集速度 – 時速50公里時, 1萬點/秒
  - 數據採集距離 – 80米
  - 數據精細度: 深度 3 cm, 位置 5 cm

**SAMEX**

14

## ☑ SAMEX – Reactive Works – 被動性工作

### ▪ Work Management – Reactive Works



## ☑ SAMEX – Contract Management 合同管理

### ▪ Contract Management

- Asset Warranty Contract – 資產保養合同
- Service Level Agreement Contract – 服務績效合同



## ✓ SAMEX – The horticulture solutions

- Other Functionalities
  - Work@Mailer / SMS Diapther (郵件發送器/短信發送器)
    - Confirm and approve through email /SMS
    - Works for any PDA with email/SMS capability



**SAMEX**

17

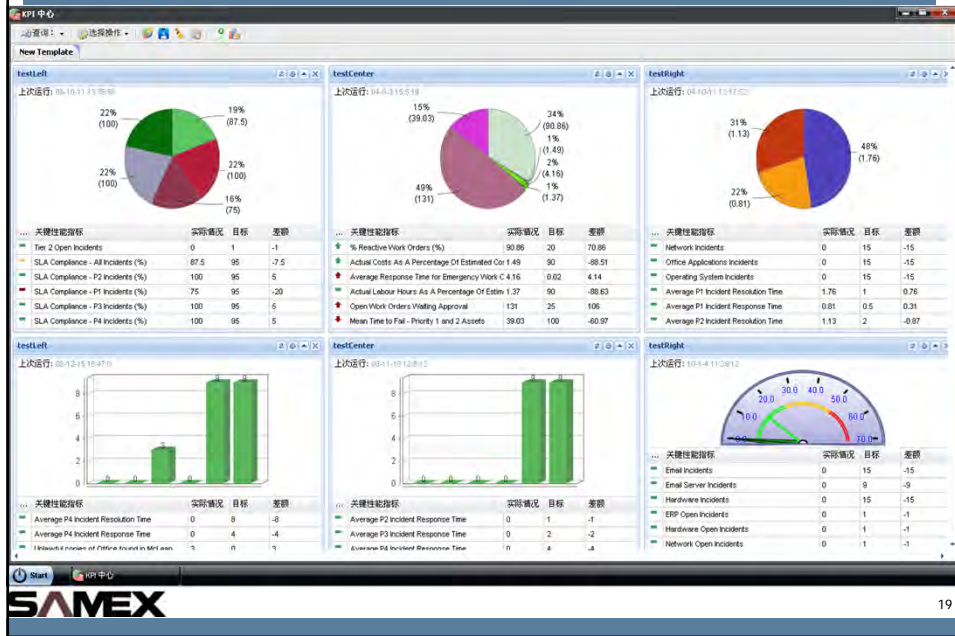
## ✓ SAMEX – The horticulture solutions

- Other Functionalities
  - Multi-Site (多組織, 多站點)
    - Operation in site level and manage globally
  - Multi-Language (多語言)
    - Support English, T Chinese and S Chinese
    - Personal profiles, easily switch between languages
  - Automatic Reminder (自動提醒功能)
    - Reminding for any date related records
      - Staff certification expiry
      - Contract expiry due
      - Unmet SLA

**SAMEX**

18

# SAMEX – The KPI Center



## Work Response Time By Site

Site	RESPONSE TIME														
	Overall		Within 0.5 Hours		Within 2 Hours		Within 4 Hours		Within 8 Hours						
	Total	Achieved	Total	Achieved	Total	Achieved	Total	Achieved	Total	Achieved					
CP	103	92	89.32%	53	45	84.91%	1	1	100.00%	48	45	93.75%	1	1	100.00%
DR	627	467	74.48%	245	132	53.88%	55	53	96.36%	201	165	82.09%	126	117	92.86%
SW	486	420	86.42%	215	174	80.93%	34	33	97.06%	103	92	89.32%	134	121	89.55%
Overall	1216	979	80.51%	513	351	68.42%	90	87	96.67%	352	302	85.80%	261	239	91.57%

### PM Monthly Forecast Report

Forecast Month: 04/2006  
 Site: APEC  
 Trade:

PM Location/Equipment	1	2	3	4	5	6	7	8	9	10	11	12	13	14	15	16	17	18	19	20	21	22	23	24	25	26	27	28	29	30	31
MSB-SC-1-1-13	3		4																												
MSB-2-FB5					3																										
MSB-2-FB6					7																										
MSB-2-FB7					8																										
MSB-2-FB8				5																											
MSB-2-FB9			6																												
MSB-3-FC1						3																									
MSB-3-FC2										5																					
MSB-3-FC3											7	8																			
MSB-3-FC4												8																			
MSB-SC-1-1-1												2																			
MSB-SC-1-1-10												3																			
MSB-SC-1-1-8														5																	
MSB-SC-1-1-12																2															
MSB-2-FB2																	3														
MSB-SC-1-1-14																		1													
MSB-SC-1-1-15																				1											
MSB-SC-1-1-16																				1											
MSB-SC-1-1-17																				1											
MSB-SC-1-1-18																				1											
MSB-SC-1-1-2																				1											
MSB-SC-1-1-3																					3										
MSB-SC-1-1-4																						3									
MSB-SC-1-1-5																															
<b>Total Required Hours:</b>	<b>3</b>	<b>6</b>	<b>9</b>	<b>18</b>	<b>3</b>					<b>5</b>	<b>7</b>	<b>18</b>	<b>3</b>	<b>5</b>	<b>2</b>	<b>3</b>	<b>1</b>	<b>5</b>	<b>3</b>	<b>3</b>											

Page: 1 of 1

### PM Overdue By Equipment Location: Needham

Equip #	Description	Location	PM Number	Days Overdue	Priority
1004	Fire Extinguisher	BR123	PM-1234	1	1
1005	Fire Extinguisher	BR132	PM-3895	5	1
7300	30 HP Drive Motor	BR300	PM-3585	20	1
7400	40 HP Drive Motor	BR400	PM-2345	3	2
7500	50 HP Drive Motor	BPM3100	PM-7474	14	2
12710	Motor 10HP/1750rpm/TEFC/254CT/60hz	NEEDHAM	PM-7964	56	2
13150	Top Breaker System	BPM3100	PM-2375	23	3
13170	Top Sealer System	BPM3100	PM-3432	1	4
23972	Air Compressor	BR132	PM-6734	56	5

Done Local intranet

<b>Work Order Outstanding Report</b>				
Failure Class	O/S Work Order (Not yet completed)			Total
	Over 7 Days 7-13 days	Over 14 days 14-29 days	Over 30 days > 30 days	
FIRE	0	1	0	1
HVAC	0	1	0	1
PLUMB	0	2	0	2
<b>Total Work Orders:</b>	<b>0</b>	<b>4</b>	<b>0</b>	<b>4</b>
WMATL	0	0	0	0
WSCH	0	0	0	0
WQUOT	0	1	0	1
WAPPR	0	0	0	0
<b>Total Work Orders:</b>	<b>0</b>	<b>1</b>	<b>0</b>	<b>1</b>
<b>CONTRACTOR</b>	0	0	0	0
<b>Total Work Orders:</b>	<b>0</b>	<b>0</b>	<b>0</b>	<b>0</b>
<b>Total Number of Work Orders:</b>	<b>0</b>	<b>5</b>	<b>0</b>	<b>5</b>

Page: 1 of 1 100% Local Intranet

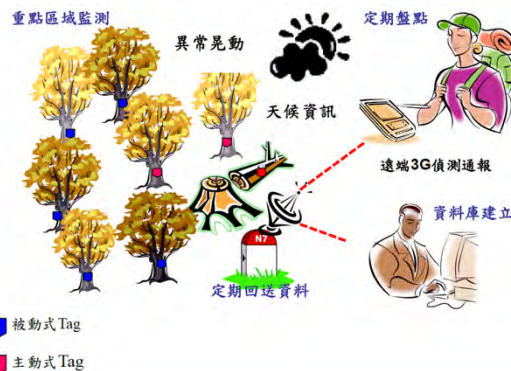
### Job Hours By Labour per Month Location: Needham

Labour	Normal Work Hours	Overtime Hours	Travelling Time	Total Work Hours	Total Allocated Hours	Utilisation
SMITH	120	40	30	190	160	118.75%
WINSTON	95	0	5	100	138	72.46%
HENRY	141	0	4	145	160	90.63%
FOUCH	105	0	15	120	120	100.00%
RICHARD	76	0	10	86	143	60.14%
<b>Total</b>	<b>537</b>	<b>40</b>	<b>64</b>	<b>641</b>	<b>721</b>	<b>88.90%</b>
	83.78%	6.24%	9.98%			

Done Local Intranet

## ☑ SAMEX – The horticulture solutions

- Future New Functionality
  - Condition Based Maintenance  
狀態監控維修保養
    - 非法樹木砍伐
    - 環境數據收集 (溫度, 光度, 濕度, 磁場等)



SAMEX

25

## ☑ SAMEX – The horticulture solutions

- Future New Functionality
  - ELMAN 動態神經網絡的樹木生長預測
    - 按照樹木種類, 生長環境建模, 並且計算每年的高度、冠闊
    - 可預算3-30年的生長情況, 平均準確度為:
      - 胸徑生長: 99.42%
      - 樹木高度: 97.30%
      - 仿真度: 97.29%

SAMEX

26

## SAMEX – The horticulture solutions

---

- About SAMEX Platform – 關於SAMEX平臺
  - No need to buy software and hardware, No need to buy SAMEX  
無需購買軟硬件，更加無需購買SAMEX軟件
  - No computer system maintenance, go ONLINE to use SAMEX  
無需電腦系統維護技術人員，只要上網便可使用
  - 5 days preparation to start  
僅需5天時間準備功夫便可使用以上功能

**SAMEX**

27

## Q&A

---



**Questions...**

- Tel: +852 2332 3262
- David Ting: +852 8100 7144  
david.ting@samexsys.com
- **SAMEX Systems Ltd.**

**SAMEX**

28